



SqueezeCenter Player Text Display Module Application Guide

Description

This module allows any Ethernet-equipped Crestron 2-series processor to display user-defined text on the display of a player that is associated with a Squeezebox Server. Multiple players may be controlled by using multiple instances of this module.






Although this module is expected to work across the spectrum of players and server configurations that are available, ControlWorks Consulting is only able to support this module when used in conjunction with a Windows PC-based implementation of the Squeezebox Server software and a SlimDevices/Logitech Squeezebox, Duet, Boom, Radio, Touch, or Transporter.

Before implementing this module you should have the Squeezebox Server software installed and running with at least one player associated with the Server. You should also have an understanding of the operation of the Server and Player. ControlWorks does not provide support for software that is not provided by ControlWorks.

Please note that at this time it is only possible to control a player that is associated with a Squeezebox Server. It is not possible to control a player on a standalone basis or a player associated with the mySqueezebox.com.

Supported Processors

This module is supported on any 2-series processor with Ethernet. Control of the player or server via infrared (IR) or serial connection is not supported by this module.

Compatibility			Processor Requirements	
 2-Series Compatible	 NOT CNMSX Compatible	 NOT System Builder Compatible	 Ethernet REQUIRED	 Compact Flash NOT NEEDED

SqueezeCenter Player Text Display v9

Telephone: (+1)440-449-1100

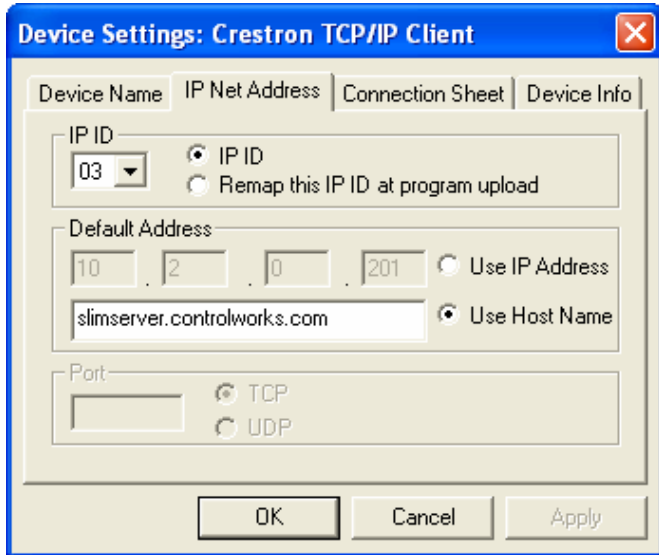
support@controlworks.com

ControlWorks Consulting, LLC

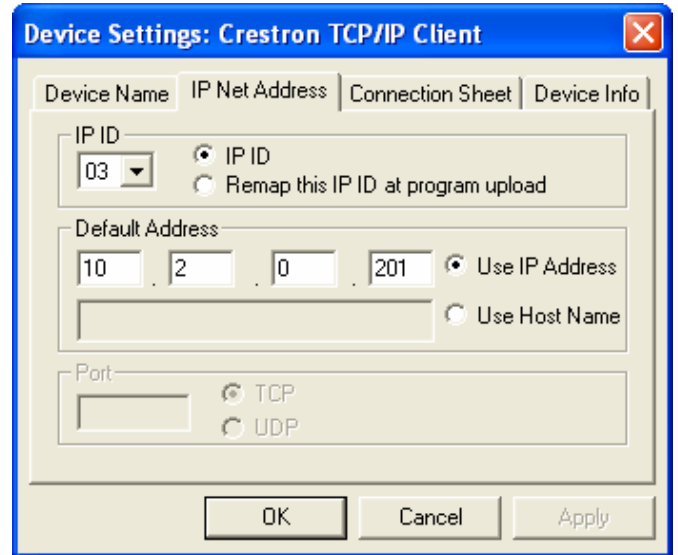
<http://www.controlworks.com>

Ethernet Configuration Information

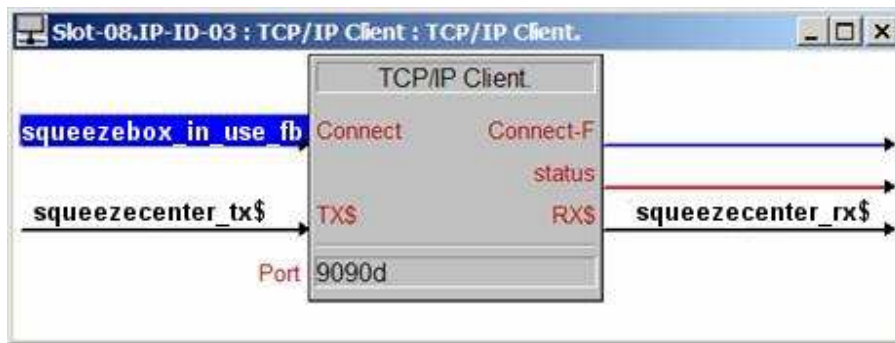
This module requires one TCP/IP client connection to the CLI port on the PC running the Squeezebox Server software, CLI port unless changed from the default is 9090. Ensure that the IP address or host name in the IP table is that of the hardware running the Squeezebox Server software and *not* that of an individual player.



or



The connection to the Squeezebox Server should be kept open at all times once established. This allows for the module to receive unsolicited status feedback and also improves the perceived performance of the module.

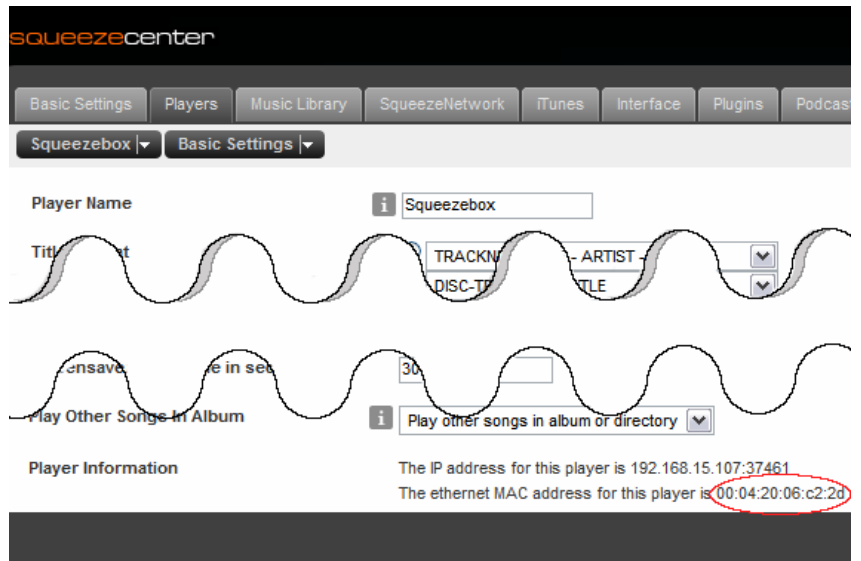


Module Application

It is important to note that this module includes a player ID parameter; for the module to function properly, the Player ID must match the Player ID (which is typically, but not always, the Ethernet MAC address) of a player associated with the Squeezebox Server.

The Player ID parameter is case sensitive; the most reliable way to determine the Player ID is to copy it from the "Player Information" page from the Squeezebox Server's web administration console. To do this:

- 1) Open an Internet browser and access the page <http://servername:9000/> where "servername" is the name or IP address of the hardware running the Squeezebox Server software.
- 2) In the lower right, click the "Settings" button
- 3) Click on the "Players" Tab and then locate the player that you wish to control. If the player has been previously given a name, the name will be displayed; otherwise the player's IP address will be displayed.
- 4) Once the player has been selected, the settings for that player will be displayed. The player ID is located at the bottom of this pane. The Player ID parameter must be entered exactly as shown on this page.



If the player_connected_fb digital output remains low even when the player is connected, the first detail that should be verified is that the value Player ID parameter of the module exactly matches that of the desired player. The MAC address is case sensitive so a player ID of 00:04:20:06:c2:2d is not equivalent to 00:04:20:06:C2:2D.

If the user-defined text is longer than can be displayed on the player, the player will scroll the text across the display automatically. The time taken to scroll the text is added to the time specified by "display_time_in_seconds", that is, if a time of 5 seconds is specified, and it takes 2 seconds to scroll the message, the message will be displayed for a total of 7 seconds.

Although line1_text\$ and line2_text\$ are optional, if no text is specified a blank line will be displayed.

Signal and Parameter Descriptions

Bracketed signals such as “[signal_name]” are optional signals

DIGITAL INPUTS

display_text_nowPulse to display the text specified in [line1_text\$] and [line2_text\$] for the period of time specified by display_time_in_seconds.

ANALOG INPUTS

display_time_in_seconds.....Number of seconds to display the text for. Time needed for scrolling, if applicable, is automatically added to this value.

SERIAL INPUTS

[line1_text\$]Text to display on line 1. Typically, this is the smaller and top most of the two lines.

[line2_text\$]Text to display on line 2. Typically this is the larger and bottom most of the two lines.

DIGITAL OUTPUTS

This module does not include any digital outputs

ANALOG OUTPUTS

This module does not include any analog outputs

SERIAL OUTPUTS

SqueezeCenter_tx\$Tie to TX\$ line of TCP/IP client symbol

PARAMETERS

Player ID.....Enter the player ID, typically the MAC address, of the player that you would like to display text on. The MAC address is case sensitive.

Support

This module is supported by ControlWorks Consulting, LLC. Should you need support for this module please email support@controlworks.com or call us at 440-449-1100. ControlWorks normal office hours are 9 AM to 5 PM Eastern, Monday through Friday, excluding holidays.

Before calling for support, please ensure that you have loaded and tested operation using the included demonstration program and touchpanel(s) to ensure that you understand the correct operation of the module. It may be difficult for ControlWorks to provide support until the demonstration program is loaded.

Updates, when available, are automatically distributed via Email notification to the address entered when the module was purchased. In addition, updates may be obtained using your username and password at <http://www.thecontrolworks.com/customerlogin.aspx>.

Distribution Package Contents

The distribution package for this module should include the following files.

For this module:

SqueezeCenter_Demo_Program_v8.smwDemo program for PRO2 processor
SqueezeCenter_Player_Text_Display_v8.umcCrestron User Module to display user-defined text on a player.
SqueezeCenter_Player_Text_Display_v8_Help.pdf.....Help file for Player Text Display module
cw_squeezecenter_display_engine_v8.uspSIMPL+ file used within the player text display module
cw_squeezecenter_display_engine_v8.ushSIMPL+ header file

For other modules included in this package:

SqueezeCenter_IR_Emulation_v8.umc.....Crestron User Module for Emulation of remote control functions
SqueezeCenter_Player_Control_v8.umcCrestron User Module for Player Control
cw_squeezecenter_player_engine_v8.uspSIMPL+ file used within the player control module
cw_squeezecenter_player_engine_v8.ushSIMPL+ header file
SqueezeCenter_IR_Emulation_v8_Help.pdfHelp file for IR Emulation module
SqueezeCenter_Player_Control_v8_Help.pdf.....Help file for Player Control module
cw_squeezecenter_null_string_v8.uspSIMPL+ file used within the player control module
cw_squeezecenter_null_string_v8.ushSIMPL+ header file

Revision History

- V9 steve@controlworks.com 2009.11.19
-No changes to this module; see help file for other modules in this package for changes related to those modules
- V8 steve@controlworks.com 2009.06.23
-No changes to this module; see help file for other modules in this package for changes related to those modules
- V7 steve@controlworks.com 2008.09.22
-No changes to this module; see help file for other modules in this package for changes related to those modules
- V6 steve@controlworks.com 2008.06.12
-No changes to this module; see help file for other modules in this package for changes related to those modules
- V5 steve@controlworks.com 2008.03.13
-Changed module name from SlimServer to SqueezeCenter
-No other changes to this module; see help file for other modules in this package for changes related to those modules
- V4 lincoln@controlworks.com 2007.05.10
-No changes to this module; see help file for other modules in this package for changes related to those modules
- V3 lincoln@controlworks.com 2007.02.20
-No changes to this module; see help file for other modules in this package for changes related to those modules
- V2 lincoln@controlworks.com 2006.11.01
-No changes to this module; see help file for other modules in this package for changes related to those modules
- V1 lincoln@controlworks.com 2006.10.08
-Initial release

Development Environment

This version the module was developed on the following hardware and software. Different versions of hardware or software may or may not operate properly. If you have questions, please contact us.

SlimDevices	Software Version
Squeezebox Server	7.4.1
Crestron Hardware	Firmware Version
Crestron PRO2 Processor	4.001.1012
Software	Software Version
Crestron SIMPL Windows	2.11.27
Crestron Vision Tools Pro-e	4.0.11
Crestron Database	20.08.003.00
Device Database	20.09.002.00
Crestron Symbol Library	636
Crestron Device Library	636

ControlWorks Consulting, LLC Module License Agreement

Definitions:

ControlWorks, *We*, and *Us* refer to ControlWorks Consulting, LLC, with headquarters located at 701 Beta Drive, Suite 22 Mayfield Village, Ohio 44143-2330. *You* and *Dealer* refer to the entity purchasing the module. *Client* and *End User* refer to the person or entity for whom the Crestron hardware is being installed and/or will utilize the installed system. *System* refers to all components described herein as well as other components, services, or utilities required to achieve the functionality described herein. *Module* refers to files required to implement the functionality provided by the module and may include source files with extensions such as UMC, USP, SMW and VTP. *Demo Program* refers to a group of files used to demonstrate the capabilities of the Module, for example a SIMPL Windows program and VisionTools Touchpanel file(s) illustrating the use of the Module but not including the Module. *Software* refers to the Module and the Demo Program.

Disclaimer of Warranties

ControlWorks Consulting, LLC software is licensed to You as is. You, the consumer, bear the entire risk relating to the quality and performance of the Software. In no event will ControlWorks Consulting, LLC be liable for direct, indirect, incidental or consequential damages resulting from any defect in the Software, even if ControlWorks Consulting, LLC had reason to know of the possibility of such damage. If the Software proves to have defects, You and not Us must assume the cost of any necessary service or repair resulting from such defects.

Provision of Support

We provide limited levels of technical support only for the most recent version of the Module as determined by Us. We do not provide support for previous version of the module, modifications to the module not made by Us, to persons who have not purchased the module from Us. In addition, we may decline to provide support if the Demo Program has not been utilized. We may withdraw a module from sale and discontinue providing support at any time and for any reason, including, for example, if the equipment for which the Module is written is discontinued or substantially modified. The remainder of your rights and obligations pursuant to this license will not be affected should ControlWorks discontinue support for a module.

Modification of Software

You may not decrypt (if encrypted), reverse engineer, modify, translate, disassemble, or de-compile the Module in whole or part. You may modify the Demo Program. In no event will ControlWorks Consulting, LLC be liable for direct, indirect, incidental or consequential damages resulting from You modifying the Software in any manner.

Indemnification/Hold Harmless

ControlWorks, in its sole and absolute discretion may refuse to provide support for the application of the Module in such a manner that We feel has the potential for property damage, or physical injury to any person. Dealer shall indemnify and hold harmless ControlWorks Consulting LLC, its employees, agents, and owners from any and all liability, including direct, indirect, and consequential damages, including but not limited to personal injury, property damage, or lost profits which may result from the operation of a program containing a ControlWorks Consulting, LLC Module or any component thereof.

License Grant

Software authored by ControlWorks remains the property of ControlWorks. ControlWorks grants You the non-exclusive, non-transferable, perpetual license to use the Software authored by ControlWorks as a component of Systems programmed by You. This Software is the intellectual property of ControlWorks Consulting, LLC and is protected by law, including United States and International copyright laws. This Software and the accompanying license may not be transferred, resold, or assigned to other persons, organizations or other Crestron Dealers via any means.

The use of this software indicates acceptance of the terms of this agreement.

Copyright (C) 2009 ControlWorks Consulting, LLC All Rights Reserved – Use Subject to License.
US Government Restricted Rights. Use, duplication or disclosure by the Government is subject to restrictions set forth in subparagraphs (a)-(d) of FAR 52.227-19.