



# URC PSX-2 iPod Dock Module Application Guide

## Description






This module allows a 2-Series Crestron processor to control the Universal Remote Control PSX-2 via a combination of TCP and UDP. TCP and UDP communications and the well-engineered dock combine to make a fast module to provide a great user experience. Enabling your clients to watch their favorite videos on a local or distributed video system, the dock provides unbalanced audio and component video outputs. More details of the dock can be found on [Universal Remote Controls](http://www.controlworks.com) website.

The PSX-2 support includes:

- Shortcuts for browsing immediately by playlists, artists, songs, albums, genres, podcasts, audio books, and composers
- Browse the iPod's contents on a touchpanel in a configurable list form.
- Ability to browse or manage the PSX-2's jukebox
- Shuffle and repeat controls
- Playback transport controls

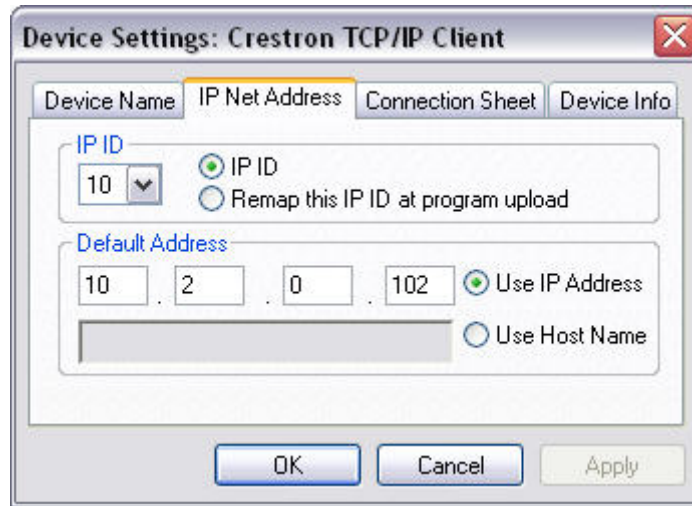
## Supported Processors

This module is supported by any 2-series processor equipped with an Ethernet port. This module also requires that the processor is running firmware version 4.xxx.xxxx or later.

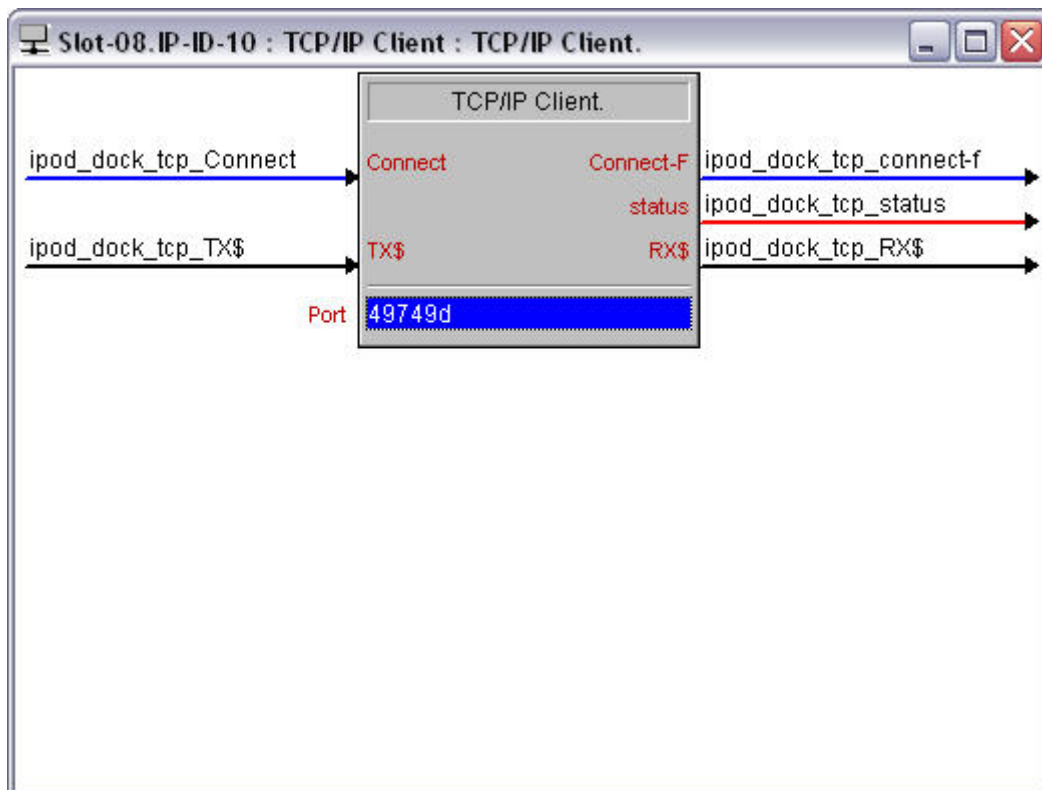
| Compatibility  |  |   | Processor Requirements  |  |
|--|--|---|---|--|
|  2-Series Compatible |  NOT CNMSX Compatible |  NOT System Builder Compatible |  Ethernet REQUIRED |  Compact Flash NOT NEEDED |

## Ethernet Configuration Information

This module requires that the processor have a TCP/IP and a UDP/IP connection to the URC PSX-2. Insert a TCP/IP client symbol into your program. Configure the TCP/IP client as shown below, taking care to enter the IP address of the PSX-2 you are controlling. The IP ID will vary depending on what order IP devices are entered into your program, or the IP ID number scheme of your system.



Declare the TCP/IP client as shown below, taking care to set the port to 49749d.

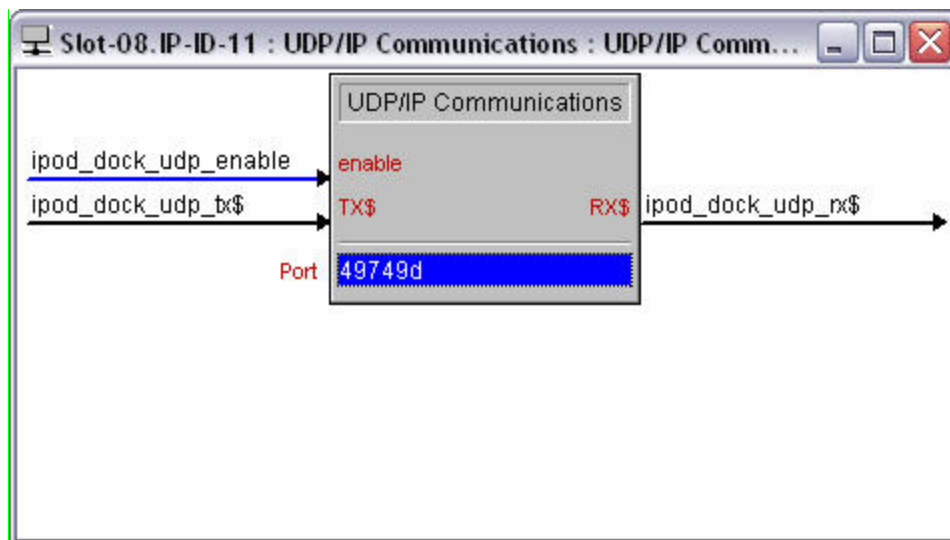


## Ethernet Configuration Information

Configure the UDP/IP client as show below, taking care to enter the IP address of 239.255.85.82. This address is the multicast address for the PSX-2 dock. The IP ID will vary depending on what order IP devices are entered into your program, or the IP ID number scheme of your system.



Declare the TCP/IP client as shown below, taking care to set the port to 49749d.



## Module Application

This module only allows for TCP/IP control of the PSX-2. IR control and emulation is not provided. The protocol for the PSX-2 does not provide navigation controls for the on-screen display. Programmers wishing to utilize these features should contact URC for IR drivers that can perform these actions. TCP/IP control provides more flexibility to the programmer to customize the controls for their system requirements.

### UDP/IP Broadcast

The PSX-2 utilizes UDP/IP broadcast updates for real-time feedback. This can be very taxing on the Crestron Ethernet port, especially when a track is playing and the dock is updating the time of the currently playing track. Great care should be taken in when the UDP/IP client is enabled. The caveat to this is that the dock sends several key status updates, such as when an IPOD is inserted or removed, over UDP/IP only.

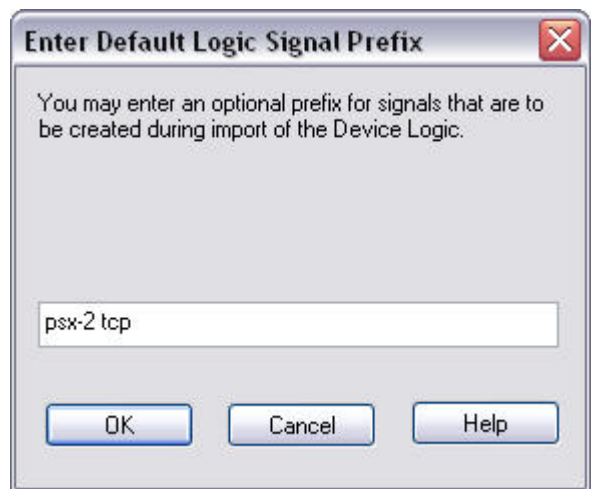
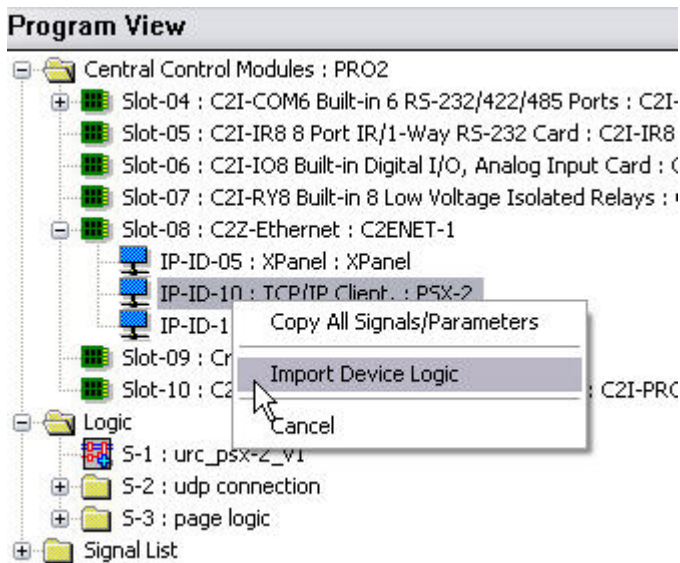
### TCP/IP Connections

The PSX-2 utilizes TCP/IP for commands and some feedback as a result of those commands. The dock will not allow a TCP/IP connection to be held open. Once connected, it will allow for a command and response, and then it will drop the connection. It is important to connect the signals between the module and the TCP/IP client as described above in the "Ethernet Configuration Information" for the module to function properly.

### Virtual Connection Logic

This module includes virtual connection logic. This enables the programmer to right-click and drag the module to other program symbols to have the signals auto-connect.

To auto-connect signals between the PSX-2 module and the TCP/IP client, right-click the module and drag your cursor to the TCP/IP Client symbol and release. Select "Import Device Logic" from the context menu. You will then be prompted to enter a prefix for the signals that are about to be created. "psx-2 tcp" is the suggested prefix, but you may enter whatever fits your programming style, as long as this prefix differs from the one used for the UDP/IP Client symbol.



To auto-connect signals between the PSX-2 module and the UDP/IP client, right-click the module and drag your cursor to the UDP/IP Client symbol and release. Select "Import Device Logic" from the context menu. You will then be prompted to enter a prefix for the signals that are about to be created. "psx-2 udp" is the suggested prefix, but you may enter whatever fits your programming style, as long as this prefix differs from the one used for the TCP/IP Client symbol.

# Signal and Parameter Descriptions

Bracketed signals such as "[signal\_name]" are optional signals

## **DIGITAL INPUTS**

|                                     |  |
|-------------------------------------|--|
| [dock_tcp-ip_client_connected]..... | Route from the tcp-ip symbol. This is latched high when the tcp-ip client has successfully connected to the device.  |
| [dock_udp_enable_connection].....   | Pulse to enable UDP-IP communications with the device. To avoid unnecessary traffic to the Crestron processor's Ethernet port, this should only be used when real-time status from the device is needed. |
| [dock_udp_disable_connection] ..... | Pulse to disable UDP-IP communications with the device.  |
| [dock_udp_toggle_connection] .....  | Pulse to toggle UDP-IP connection to the device.   |
| [transport_play] .....              | Pulse to play currently selected content on the device. Play will only work if there is something selected, will only work to play content that is paused.   |
| [transport_pause].....              | Pulse to pause the currently playing content.  |
| [transport_play-pause_toggle] ..... | Pulse to toggle playback of content between play and pause.  |
| [transport_stop] .....              | Pulse to stop playback of currently playing content. Removes all items from the now playing queue.   |
| [transport_fast_forward] .....      | While being held high, fast forwards currently playing content. Resumes playback at normal speed when released.  |
| [transport_rewind].....             | While being held high, fast reverses currently playing content. Resumes playback at normal speed when released.  |
| [transport_next_track] .....        | Pulse to skip to the next track in the now playing queue.  |
| [transport_previous_track] .....    | Pulse to skip to the previous track in the now playing queue.  |
| [transport_next_chapter].....       | Pulse to skip to the next chapter in the now playing queue. This is used for some video content.   |
| [transport_previous_chapter] .....  | Pulse to skip to the previous chapter in the now playing queue. This is used for some video content.   |
| [transport_next_playlist] .....     | Pulse to skip to the next playlist.  |
| [transport_previous_playlist].....  | Pulse to skip to the previous playlist.  |
| [transport_next_album] .....        | Pulse to skip to the next album.   |
| [transport_previous_album] .....    | Pulse to skip to the previous album.   |
| [transport_next_artist].....        | Pulse to skip to the next artist.  |
| [transport_previous_artist] .....   | Pulse to skip to the previous artist.  |
| [shuffle_off].....                  | Pulse to set shuffle mode to off.  |
| [shuffle_track] .....               | Pulse to set shuffle mode to shuffle tracks.   |
| [shuffle_album].....                | Pulse to set shuffle mode to shuffle album.  |
| [repeat_off] .....                  | Pulse to set repeat mode to off.   |
| [repeat_track].....                 | Pulse to set repeat mode to repeat tracks.   |
| [repeat_album] .....                | Pulse to set repeat mode to repeat album.  |
| [browse_main_home] .....            | Pulse to start browsing from the main level.   |
| [browse_audio_playlist_home] .....  | Pulse to browse to a list of playlists.  |
| [browse_artist_home] .....          | Pulse to browse to a list of artists.  |
| [browse_album_home].....            | Pulse to browse to a list of albums.   |
| [browse_genre_home] .....           | Pulse to browse to a list of genres.   |

|  |   |
|--|---|
| [browse_track_home] .....              | Pulse to browse to a list of songs.   |
| [browse_composer_home] .....           | Pulse to browse to a list of composers.   |
| [browse_audiobook_home] .....          | Pulse to browse to a list of audiobooks.  |
| [browse_podcast_home] .....            | Pulse to browse to a list of podcasts.  |
| [select_line1] - [select_line15] ..... | Pulse to select the line of text being displayed.   |
| [play_line1] - [play_line15] .....     | Pulse to play the line of text being displayed.   |
| [browse_back] .....                    | Pulse to browse back to the previous selection.   |
| [browse_next_page] .....               | Pulse to browse to the next page of entries in the current selection.   |
| [browse_previous_page] .....           | Pulse to browse to the previous page of entries in the current selection.   |
| [browse_last_page] .....               | Pulse to browse to the last page of entries in the current selection.   |
| [browse_first_page] .....              | Pulse to browse to the first page of entries in the current selection.  |
| [enable_tcp_polling] .....             | Pulse to enable periodic polling over TCP-IP. This should be used for keeping track of several status items while not connected to the device via UDP-IP. |
| [refresh_play_status] .....            | Pulse to get current playback status and track information.   |
| [dock_get_track_info] .....            | Pulse to get currently playing track information.   |
| [dock_get_info] .....                  | Pulse to get basic IPOD information.  |
| [dock_get_preference_values] .....     | Pulse to get IPOD preference information.   |
| [dock_get_dock_info] .....             | Pulse to get basic dock information.  |
| [dock_get_dock_state_info] .....       | Pulse to get various dock status information.   |
| [jukebox_home] .....                   | Pulse to browse to a list that contains the contents of the Jukebox.  |
| [jukebox_add_current_song] .....       | Pulse to add the currently playing song to the Jukebox.   |
| [jukebox_clear_all] .....              | Pulse to clear the entire contents of the Jukebox.  |
| [jukebox_play_all] .....               | Pulse to immediately play the contents of the Jukebox, starting from the first song in the Jukebox.   |

## **ANALOG INPUTS**

|                          |  |
|--------------------------|--|
| dock_tcp-ip_status ..... | Route from the TCP/IP client symbol. Provides the status of the TCP/IP connection to the module. |
|--------------------------|--|

## **SERIAL INPUTS**

|                          |   |
|--------------------------|---|
| dock_tcp-ip_rx\$ .....   | Route from the RX\$ of the TCP/IP client symbol. This is the data received from the device.             |
| ipod_dock_udp_rx\$ ..... | Route from the RX\$ of the UDP/IP client symbol. This contains the unsolicited feedback fro the device. |

## **DIGITAL OUTPUTS**

|                           |   |
|---------------------------|---|
| dock_tcp-ip_connect ..... | Route to the Connect on the TCP/IP client symbol. This allows the module to control when to connect and disconnect to/from the device. It is important to let the module handle this connection, as the dock will drop a connection if it is held open. |
| [dock_udp_connect] .....  | Route to the Connect on the UDP/IP client symbol.   |
| [transport_playing] ..... | Latched high when the dock reports that the IPOD is currently playing a track.  |
| [transport_paused] .....  | Latched high when the dock reports that the IPOD is currently paused.   |
| [transport_stopped] ..... | Latched high when the dock reports that the IPOD is currently stopped.  |

|                                      |  |
|--------------------------------------|--|
| [transport_fast_forwarding]          | Latched high when the dock reports that the iPod is currently fast forwarding.   |
| [transport_rewinding]                | Latched high when the dock reports that the iPod is currently fast reversing.  |
| [shuffle_off_fb]                     | Latched high when the dock reports that the current shuffle mode is off.   |
| [shuffle_track_fb]                   | Latched high when the dock reports that the current shuffle mode is set to shuffle tracks.   |
| [shuffle_album_fb]                   | Latched high when the dock reports that the current shuffle mode is set to shuffle albums.   |
| [repeat_off_fb]                      | Latched high when the dock reports that the current repeat mode is set to off.   |
| [repeat_track_fb]                    | Latched high when the dock reports that the current repeat mode is set to repeat tracks.   |
| [repeat_album_fb]                    | Latched high when the dock reports that the current repeat mode is set to repeat albums.   |
| [tcp_polling_enabled]                | Latched high when TCP polling is set to on.  |
| [dock_busy_downloading_cover_art_fb] | Latched high when the dock reports that it is busy downloading cover art from the iPod. The dock will not accept commands when this is high. |
| [dock_no_ipod_fb]                    | Latched high when the dock reports that there is not an iPod docked.   |
| [ipod_battery_charging_fb]           | Latched high when the dock reports that the iPod battery is currently charging.  |
| [ipod_battery_charged_fb]            | Latched high when the dock reports that the iPod battery is fully charged.   |
| [ipod_video_out_ntsc]                | Latched high when the dock reports that the video output format of the iPod is set to NTSC.  |
| [ipod_video_out_pal]                 | Latched high when the dock reports that the video output format of the iPod is set to PAL.   |
| [ipod_video_out_fullscreen_fb]       | Latched high when the dock reports that the video output aspect of the iPod is set to fullscreen.  |
| [ipod_video_out_widescreen_fb]       | Latched high when the dock reports that the video output aspect of the iPod is set to widescreen.  |
| [ipod_video_out_mode_off_fb]         | Latched high when the dock reports that the video output of the iPod is turned off.  |
| [ipod_video_out_mode_on_fb]          | Latched high when the dock reports that the video output of the iPod is turned on.   |
| [ipod_video_out_mode_ask_fb]         | Latched high when the dock reports that the video output of the iPod is set to prompt the user when attempting to play video content.        |

## **ANALOG OUTPUTS**

|  |  |
|--|--|
| [browse_current_page] .....                            | Outputs the current page of results displayed in the list.   |
| [browse_total_pages].....                              | Outputs the total number of pages available based on the last query and the number of lines being displayed on the user interface.   |
| [playlist_total_tracks] .....                          | Outputs the total number of tracks available in the current playlist.  |
| [playlist_current_track] .....                         | Outputs the currently playing track's position in the current playlist.  |
| [current_track_elapsed_time].....                      | Outputs the elapsed time of the currently playing track, formatted to route to a Timer symbol on a user interface.   |
| [current_track_total_time].....                        | Outputs the total track length of the currently playing track, formatted to route to a Timer symbol on a user interface.   |
| [current_track_remaining_time] .....                   | Outputs the time remaining of the currently playing track, formatted to route to a Timer symbol on a user interface.   |
| [play_multimode_line1] - [play_multimode_line15] ..... | Outputs a value of 1 or 0. Route to a multimode button on the user interface. This is used to enable/disable the display of a Play button next to a line in the browse menu, based on whether there is a line displayed. 1 is used to indicate that the button should be available to the user. 0 indicates that the button should not be displayed. |
| [browse_back_multimode].....                           | As with the above multimode values. Indicates whether the Browse Back button should be available on the user interface or not.   |
| [browse_previous_page_multimode] .....                 | As with the above multimode values. Indicates whether the Browse Previous Page button should be available on the user interface or not.  |
| [browse_next_page_multimode].....                      | As with the above multimode values. Indicates whether the Browse Next Page button should be available on the user interface or not.  |
| [browse_last_page_multimode] .....                     | As with the above multimode values. Indicates whether the Browse Last Page button should be available on the user interface or not.  |
| [browse_first_page_multimode] .....                    | As with the above multimode values. Indicates whether the Browse First Page button should be available on the user interface or not.   |

## **SERIAL OUTPUTS**

|  |  |
|--|--|
| dock_tcp-ip_tx\$ .....                                 | Route to the TX\$ of the TCP/IP client symbol.   |
| [dock_udp-ip_tx\$] .....                               | Route to the TX\$ of the UDP/IP client symbol. This is only included for the auto connect logic built in to the module and is not actually used.                                 |
| [current_playlist_name\$] .....                        | Contains the name of the currently playing playlist.   |
| [current_track_title\$] .....                          | Contains the title of the currently playing song.  |
| [current_album_name\$] .....                           | Contains the name of the currently playing album.  |
| [current_artist_name\$] .....                          | Contains the name of the currently playing artist.   |
| [current_genre\$] .....                                | Contains the name of the currently playing genre.  |
| [current_composer\$] .....                             | Contains the name of the currently playing composer.   |
| [display_list_title\$] .....                           | Contains text that describes what is currently being browsed. i.e. "Playlist", "Album", etc.   |
| [display_list_text1\$] - [display_list_text15\$] ..... | Contains the list of items that are currently being browsed. Only 1 through the number defined on the parameter, "number_of_browsing_lines" (up to 15) will have strings output. |
| [dock_name\$] .....                                    | Outputs the name of the dock that this instance of the module is connected to.   |
| [ipod_name\$] .....                                    | Outputs the name of the IPOD that is currently inserted into the dock.   |

## **PARAMETERS**

|                                |  |
|--------------------------------|--|
| number_of_browsing_lines ..... | Set to an analog value of 1d to 15d, depending on the number of lines available on the user interface. |
|--------------------------------|--|

## Support

---

This module is supported by ControlWorks Consulting, LLC. Should you need support for this module please email [support@controlworks.com](mailto:support@controlworks.com) or call us at 440-449-1100. ControlWorks normal office hours are 9 AM to 5 PM Eastern, Monday through Friday, excluding holidays.

Before calling for support, please ensure that you have loaded and tested operation using the included demonstration program and touchpanel(s) to ensure that you understand the correct operation of the module. It may be difficult for ControlWorks to provide support until the demonstration program is loaded.

Updates, when available, are automatically distributed via Email notification to the address entered when the module was purchased. In addition, updates may be obtained using your username and password at <http://www.thecontrolworks.com/customerlogin.aspx>.

### Distribution Package Contents

---

The distribution package for this module should include:

|                                    |   |
|------------------------------------|---|
| urc_psx-2_v1.umc .....             | Crestron User Module for controlling the dock   |
| urc_psx-2_engine_v1.usp .....      | SIMPL+ file used within the dock control module |
| urc_psx-2_engine_v1.ush .....      | SIMPL+ header file                              |
| urc_psx-2_demo_xpanel_v1.vtp ..... | Demo touchpanel file for XPANEL touchpanel      |
| urc_psx-2_demo_v1.smw .....        | Demo program for PRO2 processor                 |
| urc_psx-2_help_v1.pdf .....        | Help file                                       |

## Revision History

---

V1 gary@controlworks.com 03-29-2010  
-initial release

### Development Environment

---

This module version was developed on the following hardware and software. Different versions of hardware or software may or may not operate properly. If you have questions, please contact us.

| <b>URC Hardware</b>         | <b>Software Version</b> |
|-----------------------------|-------------------------|
| PSX-2                       | 1.1.0                   |
|                             |                         |
| <b>Crestron Hardware</b>    | <b>Firmware Version</b> |
| Crestron PRO2 Processor     | 4.000.0226              |
|                             |                         |
| <b>Software</b>             | <b>Software Version</b> |
| Crestron SIMPL Windows      | 2.11.27.00              |
| Crestron Vision Tools Pro-e | 4.0.19                  |
| Crestron Database           | 21.02.016.00            |
| Crestron Device Database    | 26.00.005.00            |
|                             |                         |

# ControlWorks Consulting, LLC Module License Agreement

---

## Definitions:

*ControlWorks*, *We*, and *Us* refer to ControlWorks Consulting, LLC, with headquarters located at 701 Beta Drive, Suite 22 Mayfield Village, Ohio 44143-2330. *You* and *Dealer* refer to the entity purchasing the module. *Client* and *End User* refer to the person or entity for whom the Crestron hardware is being installed and/or will utilize the installed system. *System* refers to all components described herein as well as other components, services, or utilities required to achieve the functionality described herein. *Module* refers to files required to implement the functionality provided by the module and may include source files with extensions such as UMC, USP, SMW and VTP. *Demo Program* refers to a group of files used to demonstrate the capabilities of the Module, for example a SIMPL Windows program and VisionTools Touchpanel file(s) illustrating the use of the Module but not including the Module. *Software* refers to the Module and the Demo Program.

## Disclaimer of Warranties

ControlWorks Consulting, LLC software is licensed to You as is. You, the consumer, bear the entire risk relating to the quality and performance of the Software. In no event will ControlWorks Consulting, LLC be liable for direct, indirect, incidental or consequential damages resulting from any defect in the Software, even if ControlWorks Consulting, LLC had reason to know of the possibility of such damage. If the Software proves to have defects, You and not Us must assume the cost of any necessary service or repair resulting from such defects.

## Provision of Support

We provide limited levels of technical support only for the most recent version of the Module as determined by Us. We do not provide support for previous version of the module, modifications to the module not made by Us, to persons who have not purchased the module from Us. In addition, we may decline to provide support if the Demo Program has not been utilized. We may withdraw a module from sale and discontinue providing support at any time and for any reason, including, for example, if the equipment for which the Module is written is discontinued or substantially modified. The remainder of your rights and obligations pursuant to this license will not be affected should ControlWorks discontinue support for a module.

## Modification of Software

You may not decrypt (if encrypted), reverse engineer, modify, translate, disassemble, or de-compile the Module in whole or part. You may modify the Demo Program. In no event will ControlWorks Consulting, LLC be liable for direct, indirect, incidental or consequential damages resulting from You modifying the Software in any manner.

## Indemnification/Hold Harmless

ControlWorks, in its sole and absolute discretion may refuse to provide support for the application of the Module in such a manner that We feel has the potential for property damage, or physical injury to any person. Dealer shall indemnify and hold harmless ControlWorks Consulting LLC, its employees, agents, and owners from any and all liability, including direct, indirect, and consequential damages, including but not limited to personal injury, property damage, or lost profits which may result from the operation of a program containing a ControlWorks Consulting, LLC Module or any component thereof.

## License Grant

Software authored by ControlWorks remains the property of ControlWorks. ControlWorks grants You the non-exclusive, non-transferable, perpetual license to use the Software authored by ControlWorks as a component of Systems programmed by You. This Software is the intellectual property of ControlWorks Consulting, LLC and is protected by law, including United States and International copyright laws. This Software and the accompanying license may not be transferred, resold, or assigned to other persons, organizations or other Crestron Dealers via any means.

**The use of this software indicates acceptance of the terms of this agreement.**

Copyright (C) 2010 ControlWorks Consulting, LLC All Rights Reserved – Use Subject to License.  
US Government Restricted Rights. Use, duplication or disclosure by the Government is subject to restrictions set forth in subparagraphs (a)-(d) of FAR 52.227-19.